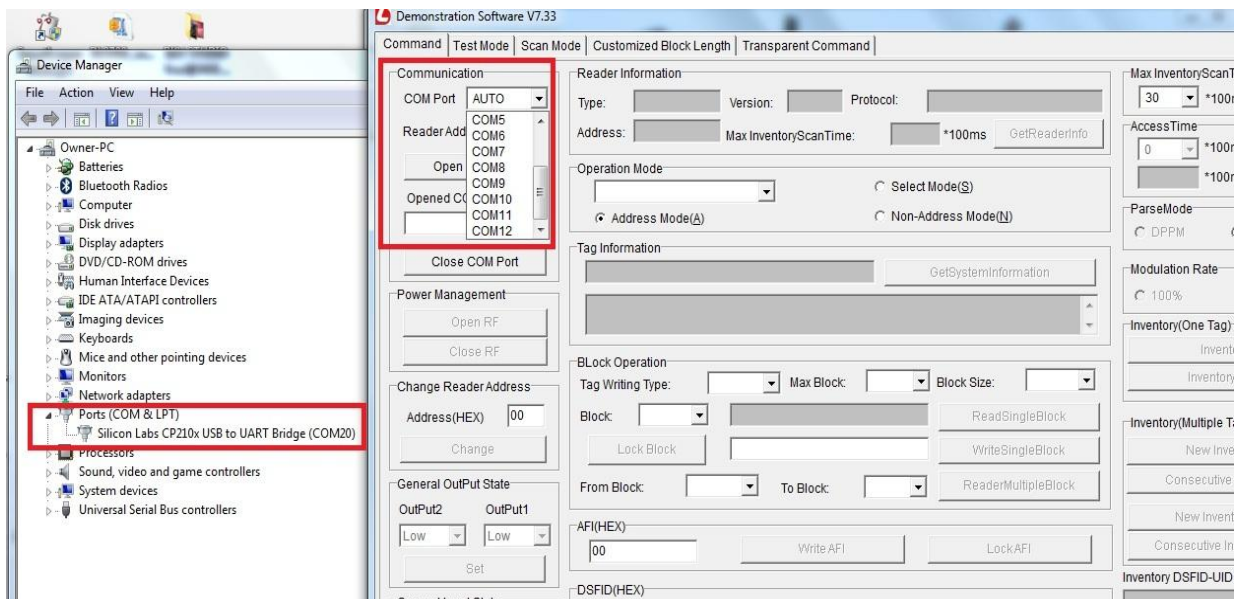


Case study

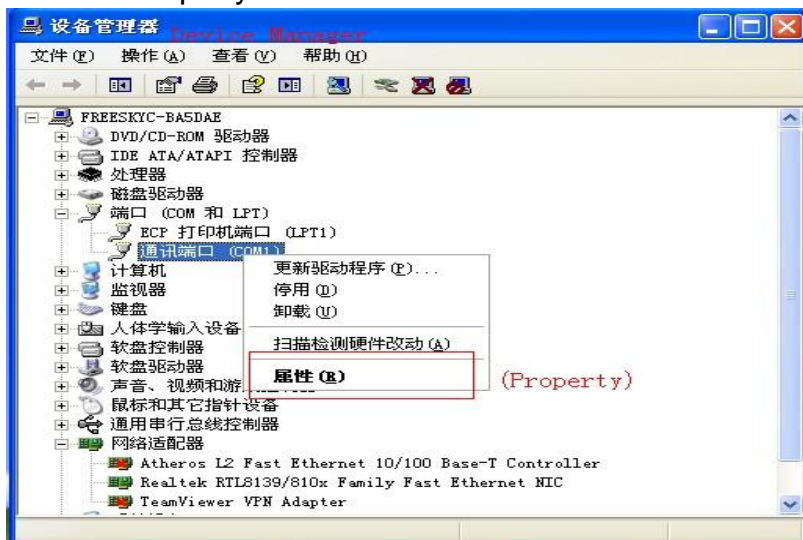
--How to adjust the COM port of your computer?

Customer: I am not able to detect the com port for the HF reader; I had attached the screen shot of the problem. Question: the maximum com port for the program is only up to 12, my laptop detect the com port as 20.



Solution: The com port of your laptop is adjustable. Please adjust the com port of your laptop according to the following steps:

Step 1: Find the "Device Manager" from your laptop. Click "Communication Port" and choose "Property".



Step 2: Then choose "Port Setting", and click "Advanced".



Step 3: Choose the COM port from "COM1" to "COM12".

